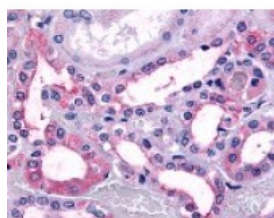




TAAR9 Antibody

CATALOG NUMBER: 48-163



Immunohistochemistry staining of TAAR9
in kidney tissue using TAAR9 Antibody.

Specifications

SPECIES REACTIVITY:	Human
TESTED APPLICATIONS:	ELISA, IHC
APPLICATIONS:	TAAR9 antibody can be used in ELISA, and immunohistochemistry starting at 20 ug/mL.
USER NOTE:	Optimal dilutions for each application to be determined by the researcher.
SPECIFICITY:	BLAST analysis of the peptide immunogen showed no homology with other human proteins, except TAAR6 (54%).
IMMUNOGEN:	TAAR9 antibody was raised against a peptide located in the 3rd extracellular domain of TAAR9 (Human).
HOST SPECIES:	Rabbit

Properties

PURIFICATION:	Immunoaffinity Chromatography
PHYSICAL STATE:	Liquid
BUFFER:	PBS, 0.1% sodium azide.
STORAGE CONDITIONS:	TAAR9 antibody should be stored long term (months) at -80 °C and short term (days) at 4 °C. As with all antibodies avoid freeze/thaw cycles.
CLONALITY:	Polyclonal
CONJUGATE:	Unconjugated

Additional Info

ALTERNATE NAMES:	TAAR9, SNORF1 receptor, TaR-3, TaR-9, TAR3, TAR9, Trace amine receptor 9, TRAR3, TA3, Trace amine receptor 3
ACCESSION NO.:	Q96RI9
PROTEIN GI NO.:	38258635
OFFICIAL SYMBOL:	TAAR9
GENE ID:	134860

Background

BACKGROUND:

TAAR9/TA3 is an Orphan-A GPCR because the ligand has not been identified. TAAR9/TA3 was identified by degenerate PCR because of its similarity to other trace amine receptors. The close proximity on chromosome 6 and high sequence homology to the other trace amine receptors suggest that TAAR9/TA3 is likely to bind a related or unidentified amine.

FOR RESEARCH USE ONLY

December 13, 2016