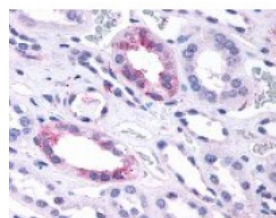




GPR146 Antibody

CATALOG NUMBER: 48-142



Immunohistochemistry staining of
GPR146 in kidney tissue using GPR146
Antibody.

Specifications

SPECIES REACTIVITY:	Human
TESTED APPLICATIONS:	IHC
APPLICATIONS:	GPR146 antibody can be used in ELISA, Western Blot, immunohistochemistry starting at 5 ug/mL, and immunofluorescence starting at 10 ug/mL.
USER NOTE:	Optimal dilutions for each application to be determined by the researcher.
SPECIFICITY:	BLAST analysis of the peptide immunogen showed no homology with other human proteins.
IMMUNOGEN:	GPR146 antibody was raised against a peptide located in the C-Terminal cytoplasmic domain of GPR146 (Human).
HOST SPECIES:	Rabbit

Properties

PURIFICATION:	Immunoaffinity Chromatography
PHYSICAL STATE:	Liquid
BUFFER:	PBS, 0.1% sodium azide.
STORAGE CONDITIONS:	GPR146 antibody should be stored long term (months) at -80 °C and short term (days) at 4 °C. As with all antibodies avoid freeze/thaw cycles.
CLONALITY:	Polyclonal
CONJUGATE:	Unconjugated

Additional Info

ALTERNATE NAMES:	GPR146, PGR8, G protein-coupled receptor 146
ACCESSION NO.:	Q96CH1
PROTEIN GI NO.:	67461068
OFFICIAL SYMBOL:	GPR146
GENE ID:	115330

Background

BACKGROUND: GPR146 is an Orphan-U GPCR with an unknown ligand, but is likely to be a chemokine receptor.

FOR RESEARCH USE ONLY

December 13, 2016